



C o l l e c t i o n

Proligna

P o d u c t s w i t h a c o r e

The most extensive range of colours and interior cladding finishes for dry environments.

Deeply special.

Interior wooden cladding contributes Immense features to any given space: warmth, beauty, comfort, style and even light and joy, making it a vibrant place where people feel more comfortable.

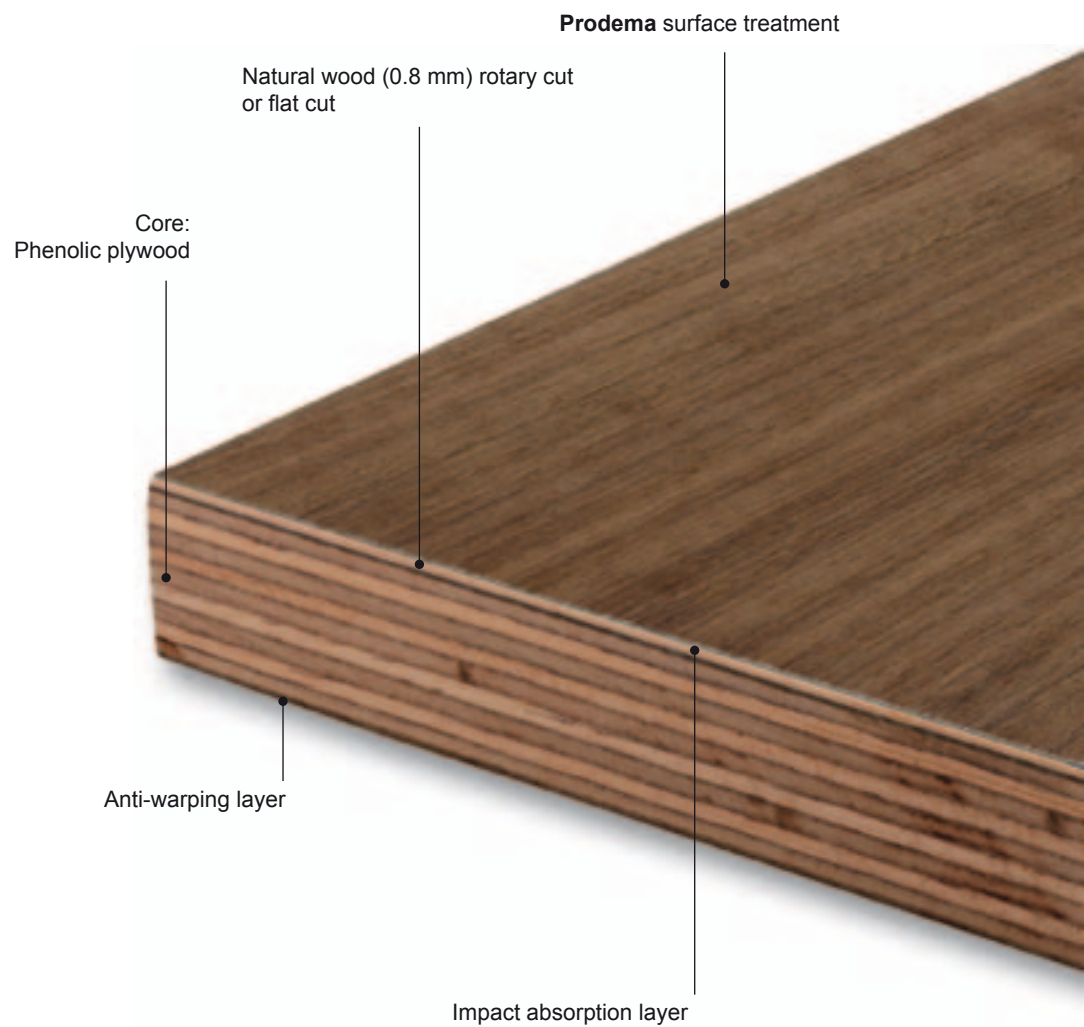


BEC
Idom Engineering Studio, Sener
Barakaldo (Spain)


1.4 *Proligna*

1.4.1 Composition

Proligna panels have a plywood core that has been impregnated with thermosetting phenolic resins and the natural wood surface is protected by a proprietary wear-resistant film or coat.



1.4.2 Technical characteristics

 Made to last wooden Products	<h1>TECHNICAL DATA SHEET</h1>			Doc.: FTPROLIGNA	
				Rev.: 009 – Oct 2011	
				Page: 1/1	
MATERIAL:		THICKNESS :		SURFACE FINISH :	
PROLIGNA		8-20 mm		TEXTURE	
TESTS	RESULTS	PROPERTY OR ATTRIBUTE	MESURE UNIT	STANDARD	
1. INSPECTION REQUIREMENTS					
Colour, pattern and surface finish	Due to the fact that wood is a natural product, each veneer may be considered as unique. Colour and structure differences are considered as normal. Singularities such as knots and resin inclusions are not considered as defects, but as a part of the décor. There are differences in light fastness performances depending on the wood species and the source of the wood.				EN 438-8 Part 5.2.2.3
2. DIMENSIONAL TOLERANCES					
Thickness (t)	7,0 – 9,6 9,9 – 12,4 12,9 – 15,6 15,7 – 18,3 18,9 – 21,3	t = 8,0 t = 11,0 t = 14,0 t = 17,0 t = 20,0	mm	EN 438-2 Part 5	
Length and width	+ 10 / - 0	-----	mm	EN 438-2 Part 6	
Edge straightness	1,5	-----	mm/m	EN 438-2 Part 7	
Edge squareness	1,5	-----	mm/m	EN 438-2 Part 8	
3. GENERAL					
Flexural strength	≥ 70 ≥ 60	Longitudinal direction Transversal direction	MPa	EN 310	
Flexural Modulus	≥ 7.000 ≥ 6.000	Longitudinal direction Transversal direction	MPa	EN 310	
Resistance to surface wear	≥ 50 ≥ 150	Resistance to surface wear	Revolutions Initial wear point Wear resistance	EN 438-2 Part 10	
Resistance to immersion in boiling water	≥ 4	Aspect	Rating	EN 438-2 Part 12	
Resistance to scratching	3	Force	Rating	EN 438-2 Part 25	
Lightfastness (Xenon arc)	≥ 4 < 4 (A)	Contrast	Grey scale rating	EN 438-2 Part 27	
Perpendicular tensile strength	≥ 2	Adhesion force	MPa	ASTM C 297	
4. CE REQUIREMENTS					
Reaction to fire	D-s2,d0	Euroclass t ≥ 8 mm	Classification	EN 13.501-1	
Resistance to fixings	e < 15 mm: ≥ 150	Force	N/mm	EN 438-7 Part 4.5	
	e ≥ 15 mm: ≥ 2.000		N		
Density	≥ 0,75	Density	g/cm ³	-	
Content of pentachlorophenol	≤ 5	Concentration	ppm	EN 438-7 Part 4.10	
Release of formaldehyde	E1	Release of formaldehyde	Class	EN 717-2	
Bonding strength	≥ 1	Bond strength	MPa	EN 438-7 Part 4.7	
Flexural tensile strength	≥ 1	Bond strength	MPa	EN 438-7 Part 4.8	
Glue-line quality	5	Expression of results	Rating	EN 438-7 Part 4.13.3	
Resistance to elevated temperature	No damage	Aspect	Result	EN 438-7 Part 4.13.3	
Water resistance	≤ 7	Thickness increase	%	EN 438-7 Part 4.13.3	

(A) Maple, Natural Beech, White Oak

Prologna Reaction to fire

NON-Fire-proof material (Prologna)

Thickness ≥ 8 mm. | Class.: D-s2, d0 (according to EN 13.501-1)

1.4.3 Size and weight

Dimensions:

Length x Width

2.440 mm. x 1.220 mm. (tolerance approx ± 2 mm.)

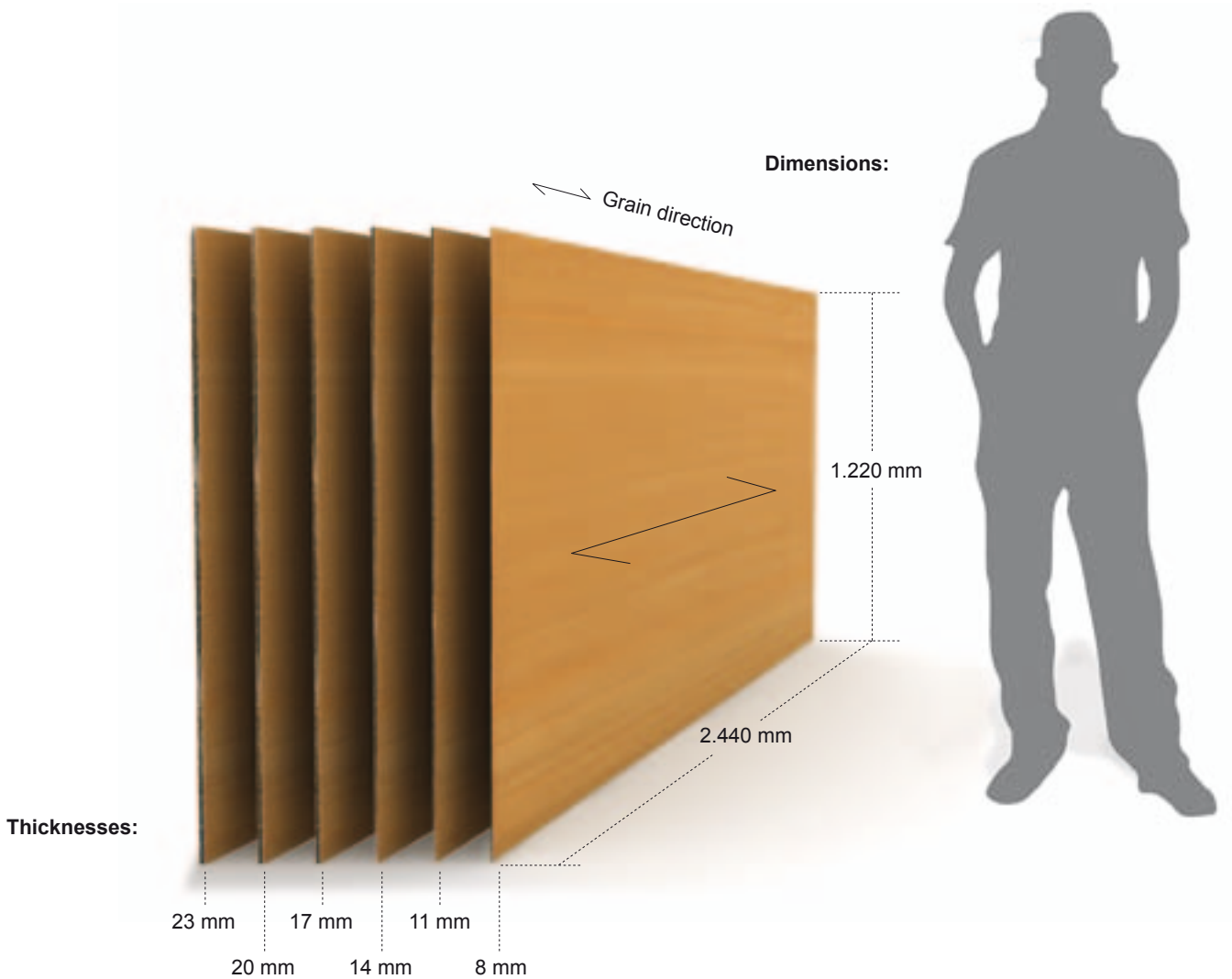
Thicknesses

8, 11, 14, 17, 20, 23 mm.

Other dimensions: please check.

Weight:

Thickness of board	8	11	14	17	20	23	(mm)
Weight / surface	6,40	8,80	11,20	13,60	16,00	18,40	(kg / m ²)



1.4.4 Colours

Prodema panels veneers are made with natural wood so the tone and grain of the samples are a mere guide. The surface composition of the **Prodema** panels may also vary depending on the application, so there may be differences in tone for the same colour in the different families of panels.

Flat cut wood



Changes in tone and grain between strips is particularly marked in the cases Eucalyptus and Teak so it is advisable to consult with the factory.

Rotary cut wood Aycus Veneer



Dark brown



Light brown



Mocca



Black wood



Cream

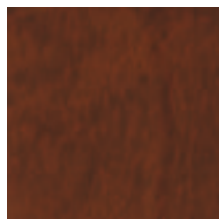


Honey



Natural A

Okume Veneer



Deep brown



Almond



Ice grey

Would you like a sample of some of our products?

Simply send an email to:
prodema@prodema.com
and we will get it to you.

www.prodema.com

All **Proigna** finishes are Texture (raised)



Civic Centre
Architect . Ángel de Diego
Barakaldo (Spain)