

NOW AVAILABLE IN
fluorlac®

larson®

Composite Panels for Architectural Envelopes

larcore® A2

Aluminium Honeycomb Panels for Architectural Envelopes

Colour Chart

Transform your ideas into reality



Alucoil®

Grupo Alibérico

larson® & larcove® A2

Aluminium Composite & Honeycomb Panels for Architectural Wall Cladding

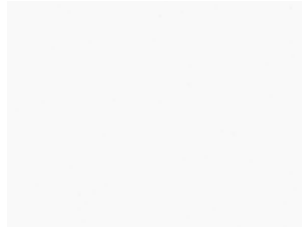
SOLID COLOURS



Signal White 9003⁽¹⁾
(ES1568)



Traffic White 9016⁽¹⁾
(ES1763)



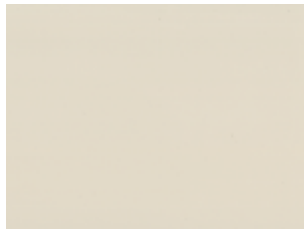
Pure White 9010⁽¹⁾
(ES1709)



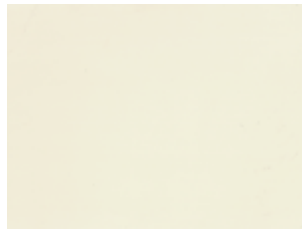
White Grey 9002
(ES1368)



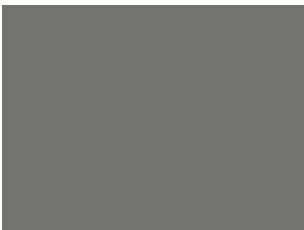
Cream White 9001
(ES1339)



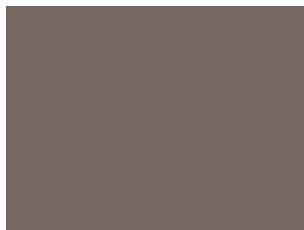
Cream
(ES1346)



Light Ivory 1015
(ES1454)



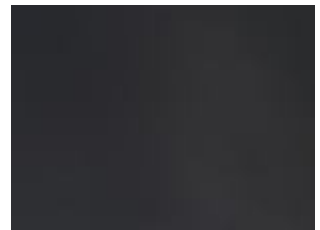
Mouse Grey 7005
(ES2150)



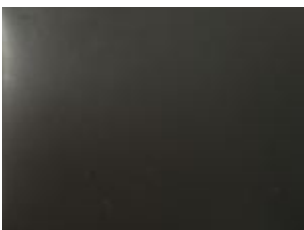
Beige Grey 7006
(ES1529)



Basalt Grey 7012
(ES1343)



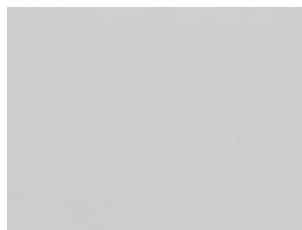
Anthracite Grey 7016⁽¹⁾
(ES1563)



Umbra Grey 7022⁽¹⁾
(ES1551)



Graphite Grey 7024⁽¹⁾
(ES1369)



Light Grey 7035⁽¹⁾
(ES1518)



Dusty Grey 7037
(ES1565)



Window Grey 7040
(ES1571)



Silk Grey 7044
(ES1402)



Black Grey 7021⁽¹⁾
(ES1354)



Jet Black 9005⁽¹⁾
(ES1536)



Sepia Brown 8014⁽¹⁾
(ES1478)



Chesnut Brown 8015⁽¹⁾
(ES2477)



Chocolate Brown 8017
(ES1449)



Grey Brown 8019⁽¹⁾
(ES1464)



Flame Red 3000
(ES2780)



Ruby Red 3003⁽¹⁾
(ES2474)



Purple Red 3004⁽¹⁾
(ES2475)



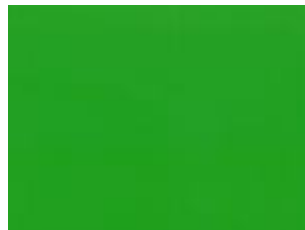
Traffic Red 3020⁽¹⁾
(ES2100)



Signal Yellow 1003⁽¹⁾
(ES2476)



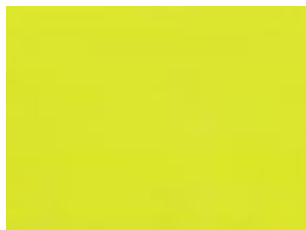
Pure Orange 2004⁽¹⁾
(ES2302)



Yellow Green 6018⁽¹⁾
(ES1405)



BC Magenta
(ES2478)



BC Green⁽¹⁾
(ES2473)



Violet Blue 5000⁽¹⁾
(ES1545)

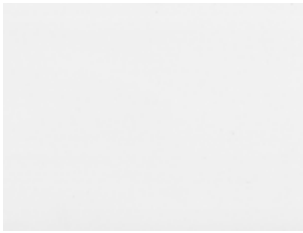


Ultramarine Blue 5002⁽¹⁾
(ES1512)



Steel Blue 5011
(ES1519)

METALLIC COLOURS



White Metallic⁽¹⁾
(ES2133)



Sunrise Silver⁽¹⁾
(ES1661)



Silver Metallic⁽¹⁾
(ES1990)



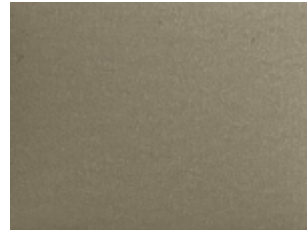
Smoke Metallic⁽¹⁾
(ES1605)



Brilliant Metallic
(ES1537)



Champagne Metallic⁽¹⁾
(ES1608)



Bronze Metallic⁽¹⁾
(ES1646)



Pearl Beige 1035
(ES1553)



Lead Grey⁽¹⁾
(ES2132)



Grey Metallic⁽¹⁾
(ES1659)



Sunshine Grey Metallic
(ES1592)



Manganese⁽¹⁾
(ES2588)



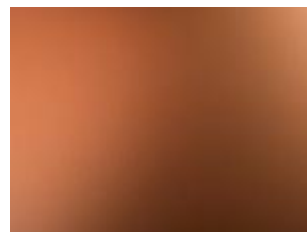
Dark Grey Metallic⁽¹⁾
(ES2134)



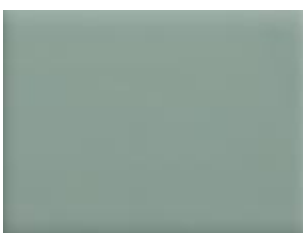
Gold Metallic
(ES1371)



Copper Metallic⁽¹⁾
(ES1521)



Copper 1968
(ES1403)



Patagonia Green
(ES1610)



Blue Metallic⁽¹⁾
(ES1637)

POSSIBILITIES

PVDF (Polyvinylidene Fluoride). Coating based on PVDF resins (Kynar and Hylar as main brands) with extraordinary performance.

Nominal paint thickness:

a) **PVDF 2L Coastal:** 31 μ approx.

- *Gloss levels from 20 to 40 g.u.*
- *Excellent colour stability, almost no chalking and very good chemical resistance.*
- *Great protection against weathering, UV radiation and atmospheric contaminants.*
- *Outstanding flexibility for profiling, bending and roll forming.*
- *Recommended for demanding environments like industrial and coastal areas, airports, etc.*

DG5 (High Durable Polyester). Coating based on HDP resins.

Nominal paint thickness:

a) **DG5 2L Coastal:** 35 μ approx, (depending on the colour)

b) **DG5 3L Coastal:** 55 μ approx, (depending on the colour)

c) **DG5 2L:** 25 μ approx, (depending on the colour)

- *Gloss levels from 10 to 90 g.u.*
- *Outstanding protection against weathering, UV radiation and atmospheric contaminants.*
- *Excellent hardness and flexibility for profiling, bending and roll forming.*

NEW fluorlac® Coating paint for **larson® & larcove® A2**

FEVE LUMIFLON™ 2 LAYERS. LUMIFLON™ fluoropolymer resin based coating with a nominal thickness of 30 μ , (depending on the colour).

COLOURS:

- *RAL & NCS colour charts in matt, satin and high gloss finishes.*
- *Matched colours.*

QUANTITIES:

- **Orders from 75 sqm.**

SERVICES:

- *Very short delivery times, **2-3 weeks.***
- *One face coated with a protective film of 100 μ thick.*

Other characteristics:

- *Excellent good weatherability and chemical resistance*
- *High abrasion resistance.*

Find more regarding colours and projects at **NEW WEB**



Alucoil® Design

Grupo Alibérico

Endless Architectural Design Possibilities

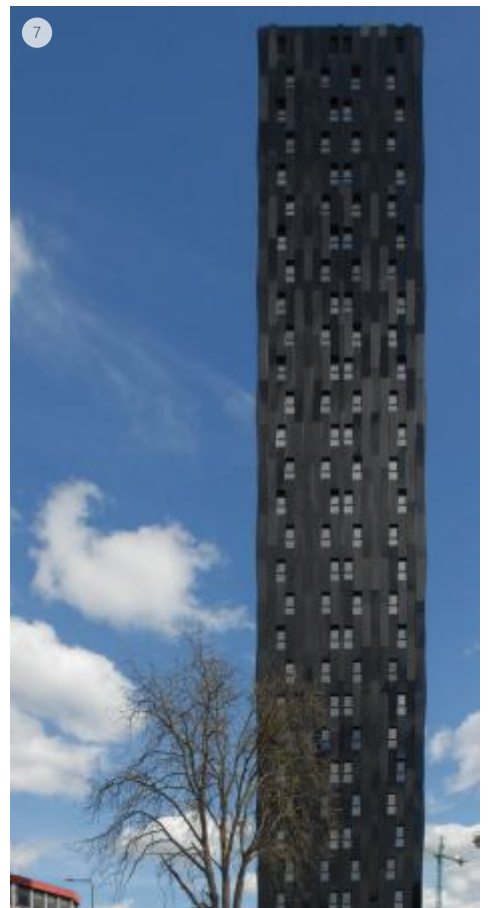
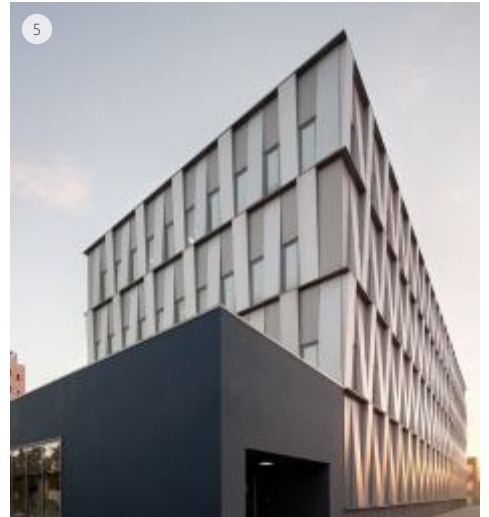


¹⁾Coils stock 1500 mm wide on **larson®** panels coated with PVDF or HDP paints.

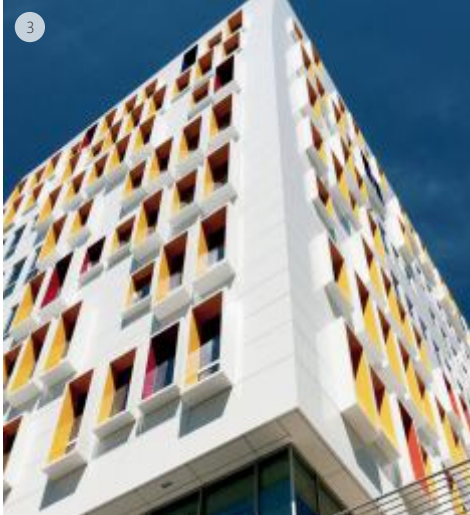
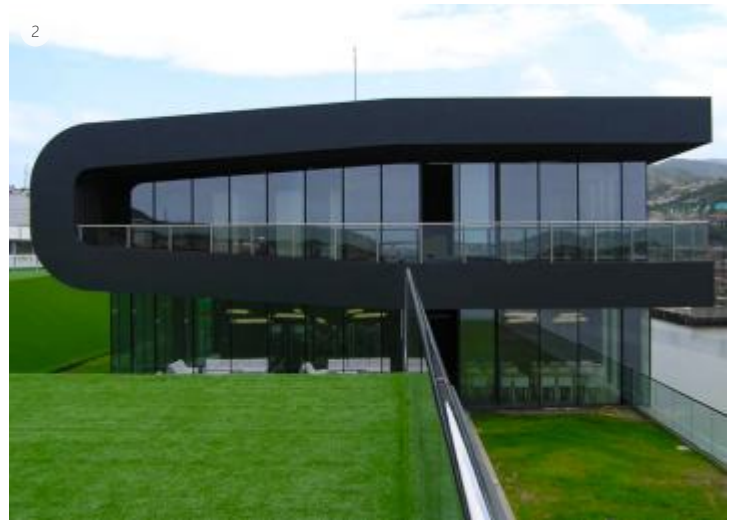
Other request availability - Widths not in stock request minimum order.

The colours in this colour chart are very close to reality. We advise to select the final colour over physical samples.

The colours shown in this document are matt finishes with a level of gloss lower than 40.



1. Marriot Hotel (Portsmouth, UK) Pearl Beige 1035 and Anthracite Grey 7016. Satellite Architects / 2. Maison de l'entreprise (France). Grey Metallic and White 16. BELLECOUR Architectes / 3. Park Gate Tirana -Martini company- (Tirana, Albania). 3011. 3007. 3001. 7021. X-Plan Studio Tirana / 4. Kindergarten (Spain) 6005. 9010. 3004. 1003. 5002 / 5. Centre MCIA (Tarrasa Barcelona) Champagne Metallic and Silver Metallic. Mestura Arquitects / 6. Ukrainian University (Lviv, Ukraine) Sunrise Silver. Behnisch Architekten / 7. Torre Bolueta (Bilbao, Spain) Jet Black 9005. VArquitectos / 8. Hotel Orange (Poland). Orange / 9. Worcester Polytechnic Institute (Massachusetts, USA). BC Green, Moss Green, Yellow Green and Signal Blue.



1. Sector Sur health center (Cordoba, Spain). Traffic Red 3020, Yellow 1021, Jet Black 9005, Pure White 9010 and Ultramarine Blue 5002. JOAQUIN SERRANO DÍAZ Arquitectos / **2. IDOM Headquarter (Bilbao, Spain).** Anthracite Grey 7016 / **3. Housing building (Marsella, France).** White / **4. PRIMAFRIO (Murcia, Spain).** Pure White 9010. MUHER Arquitectos / **5. Muziekacademie (Dilbeek, Belgium).** Sunrise Silver, Smoke Metallic. Carlos Arroyo Arquitectos / **6. ALBAN TOWER (Tirana, Albania).** RAL 5001/5003/5009/6004/6005/6011/6020/7006/7013 & 7022. Architect: Archea Associati (Marco Casamonti) / **7. Cereal Docks (Camisano Vicentino, Italy).** BC Green & Green Patina.



Alucoil®

Grupo Alibérico

Specialists in the manufacture of metal and honeycomb panels for architectural envelopes

Advanced Materials - 40 years Experience - In house-Technology

Wide Product Range - Top Quality Products - Premium Brands

Innovative Solutions - Local Service - Fast & Flexible

The Easiest Company to do Business with!



Polígono Industrial de Bayas C/ Ircio. Parcelas R72-77

09200 Miranda de Ebro, Burgos - SPAIN

Tel.: +34 947 333 320 Fax: +34 947 324 913

info@alucoil.com

www.alucoil.com

Alucoil® S.A.U. reserves the right to change or remove information contained in this brochure without prior notice.
Please visit us at www.alucoil.com to check the latest version.